

MULTITRODE®

MULTITRODE PTY LTD ACN 010 679 419

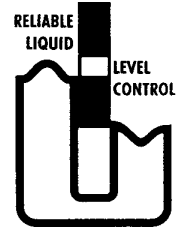
HEAD OFFICE:
Commercial Court
130 Kingston Road
UNDERWOOD
BRISBANE QLD 4119

POSTAL ADDRESS:
P.O. Box 2465
LOGAN CITY DC QLD 4114
AUSTRALIA

TEL: (07) 3808 4011
FAX: (07) 3808 0011

E-mail: control@multitrode.com.au
Home Page: <http://www.multitrode.com.au>

MULTITRODE INC:
6720 East Rogers Circle
Boca Raton
Florida 33487
TEL: (561) 994 8090
FAX: (561) 994 6282



DECLARATION OF CONFORMITY for CE Marking

Suppliers details:

Multitrode Pty Ltd,
130 Kingston Road
Underwood
4119, Queensland
Australia

hereby declare that the following product family

MTR – 2 (Multitrode Level Control Relay 240VAC)
MTR – 3 (Multitrode Level Control Relay 110VAC)
MTR – 4 (Multitrode Level Control Relay 24VAC)
MTR – 5 (Multitrode Level Control Relay 24VDC)
MTR – 6 (Multitrode Level Control Relay 12VDC)

And

0.2/1-10, 0.5/3-10, 1.0/10-10, 1.5/10-10, 2.0/10-10, 2.5/10-10 probes

conforms to the following Product Specifications

Safety 73/23/EEC Low Voltage Directive
UL Listing to UL508, sixteenth edition
EMC 89/336/EEC EMC Directive
EN50081-1 1992(EN55011 Group 1, Class B)
EN50082-1 1992 (EN61000-4-2, EN61000-4-3, EN61000-4-4).

Supplementary Information

The product herewith complies with the requirements of the above Directives and carries the CE-Marking accordingly.



Craig Parkinson

Managing Director

19th October 1999

Leaders in Pump Station Management Technology